

Welch Allyn Advancing Frontline Care



You are on the front lines. Facing the challenges of extended care, long-term care and assisted living, your knowledge and compassion get put to the test each and every day. Your focus is providing residents with the care they need when they need it. Our focus is making sure you have the quality tools you need to do that job simply and efficiently.

Advancing the front line of care. Welch Allyn offers a wide range of products designed with extended caregivers in mind. As you go through this catalog, you will find quality hospital-grade products that are innovative, simple to use, durable and very cost effective.

You can concentrate on what you do best. Welch Allyn will continually provide you with the professional tools you need to get your job done with confidence.

EXTENDED CARE

Spot Vital Signs® LXi #45ME0-E1	5
767 Integrated Diagnostic System #76791-2MPX.....	16
Green Series™ GS 600 Minor Procedure Light #44600	21
Ear Wash System #29350	22
CP 200™ ECG #CP2A-1E1.....	8
Harvey™ Elite® Stethoscope #5079-125	13
Braun ThermoScan® PRO 4000 Thermometer #04000-200	9

For more information on the products in this catalog, visit our website at www.welchallyn.com.



“We love the convenience. Being able to automatically collect all the vital signs in a short amount of time really frees up the nurses.”

— LAURIE MCGRAW, RN
MINONG, WI



#42MTB-E1

Spot Vital Signs®

The Welch Allyn Spot Vital Signs takes quick, easy, accurate vital signs at an affordable price. The fully automated, multiparameter Spot Vital Signs has become the device of choice for frontline caregivers in ambulatory settings.

- Fast and accurate—completes NIBP, pulse rate, temperature, and SpO₂ in approximately 30 seconds
- Multiparameter and modular so you can select precisely the vital signs you need
- Connectivity to integrate with electronic health records
- Set it on a countertop, mount it on a wall or wheel it on a mobile stand
- Big, bright, easy-to-read LCD screen
- Fully upgradeable to meet your changing needs
- One of the most cost-effective multiparameter instruments on the market

Optional Features:

- Temperature—SureTemp® thermometry gives you the versatility to obtain oral, axillary and rectal temperatures with the speed you want and accuracy you demand:
 - Oral—approximately 4 seconds
 - Axillary—approximately 10 seconds
 - Rectal—approximately 15 seconds
- Pulse oximetry—Spot Vital Signs can be configured with the latest pulse oximetry technology from Masimo® and Nellcor® for accurate SpO₂ and pulse rate readings

- #4200B-E1 Spot with NIBP only (includes Pulse Rate and MAP)
- #420TB-E1 Spot with NIBP and SureTemp Thermometry
- #42M0B-E1 Spot with NIBP and Masimo Pulse Oximetry
- #42MTB-E1 Spot with NIBP, Masimo Pulse Oximetry and SureTemp Thermometry
- #42N0B-E1 Spot with NIBP and Nellcor Pulse Oximetry
- #42NTB-E1 Spot with NIBP, Nellcor Pulse Oximetry and SureTemp Thermometry
- #4700-60 Mobile Stand with Basket
- #4701-62 Wall Mount with Basket
- #4200-170 Connectivity Accessory Kit with PC IR Adaptor
- #S1-4200 One-Year Comprehensive Partnership Program
- #S1-4200-2 Two-Year Comprehensive Partnership Program

Spot Vital Signs® LXi

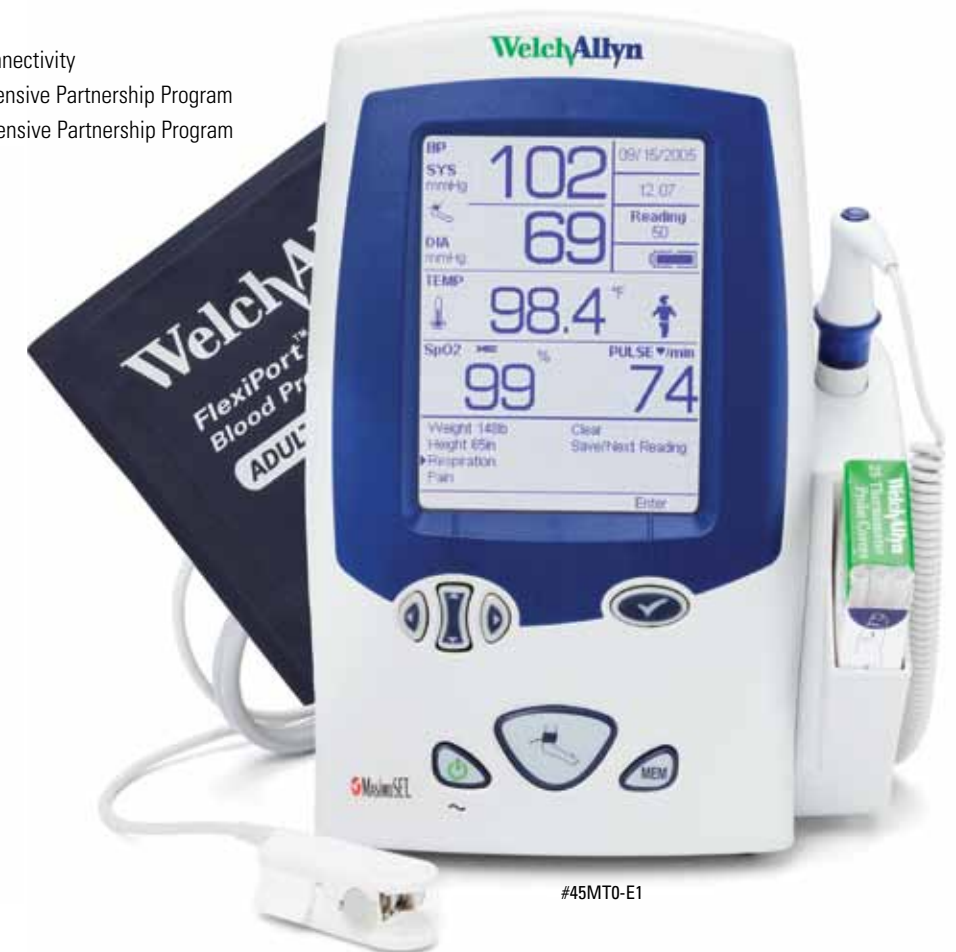
Check blood pressure faster. Take temperatures using the method you prefer. Measure SpO₂ with the technology you want. The Spot Vital Signs LXi is a faster, smarter, more efficient way to take vital signs. Connect to a digital scale. Manually enter parameters. Print your results or send them electronically. No matter how you configure it, Spot Vital Signs LXi lets you gather the data you want with a clear, logical interface.

- SureBP™ measures blood pressure in about 15 seconds as the cuff is inflating—resulting in time savings for you and improved comfort for your patients. Pulse rate and MAP included
- Choice of SureTemp® Plus or Braun ThermoScan® PRO 4000 ear thermometer
- Optional Masimo® and Nellcor® SpO₂
- Ability to manually enter weight, height, respiration rate, and pain level; calculates Body Mass Index
- Connects to select Health o meter® or Tanita® digital scales
- 50-reading memory allows retrieval of previous data for review or to download later
- Comes connectivity-ready, allowing you to connect to the electronic health record (EHR) system you have now or one you'll get in the future
- Bigger, brighter LCD display provides greater visibility from farther distances

- #450T0-E1 Spot LXi with SureBP and SureTemp Plus Thermometer
- #450E0-E1 Spot LXi with SureBP and Braun ThermoScan® PRO 4000 Thermometer
- #45MT0-E1 Spot LXi with SureBP, Masimo SpO₂ and SureTemp Plus Thermometer
- #45ME0-E1 Spot LXi with SureBP, Masimo SpO₂ and Braun ThermoScan® PRO 4000 Thermometer
- #4700-60 Mobile Stand with Basket
- #4701-62 Wall Mount with Basket
- #4500-500 External Printer
- #4500-910 Barcode Scanner
- #4500-925 Cable for wired connectivity
- #S1-4500 One-Year Comprehensive Partnership Program
- #S1-4500-2 Two-Year Comprehensive Partnership Program



#4700-60



#45MT0-E1



Connex® ProBP™ 3400 Digital Blood Pressure Device

Accurate, reliable, connected blood pressure readings in the palm of your hand.

- Small, handheld design makes device easy to carry and capture readings in a triage setting
- Hospital-grade SureBP™ technology enables fast, accurate 15-second blood pressure readings, improving patient comfort
- Obtains accurate readings and minimizes error codes, even in the presence of many cases of weak pulse
- USB-wired technology enables connectivity to select EHR/EMR/HIS systems, improving documentation accuracy and efficiency
- Handheld, wall mount and mobile stand configurations
- Compatible with FlexiPort® blood pressure cuff sizes ranging from small child (size 8) to thigh (size 13)
- Lithium ion battery technology delivers 100 readings on a single charge with rapid recharge time
- Upgradeable so that your initial investment is protected as your needs change

Handheld

- #34XFHT-B Connex ProBP 3400 with SureBP
- #34XXXHT-B Connex ProBP 3400 with Standard BP

Wall Mount

- #34XFWT-B Connex ProBP 3400 with SureBP
- #34XXXWT-B Connex ProBP 3400 with Standard BP

Mobile Stand

- #34XFST-B Connex ProBP 3400 with SureBP
- #34XXXST-B Connex ProBP 3400 with Standard BP

- #S1-3400 One-Year Comprehensive Partnership Program
- #S1-3400-2 Two-Year Comprehensive Partnership Program



Connex® Vital Signs Monitor 6000 Series

The Connex VSM is an advanced monitor that features a bright touchscreen display that is visually intuitive to operate and provides quick access to all device settings and controls—perfect for extended care facilities with an immediate or future need for EHR connectivity..

- 15-second SureBP™ NIBP
- Optional SureTemp® Plus or Braun ThermoScan® PRO 4000 thermometry
- Optional Masimo® or Nellcor® pulse oximetry (SpO₂)
- Blood pressure intervals can be set for predefined or two custom programmable cycle times
- Only one step away from the home screen for any function or parameter
- Alarm controls are displayed and accessible on the home screen
- Save vitals information with the patient name for future reference
- Operate from an AC outlet or a high-performance lithium-ion battery
- 100% battery recharge in only four hours
- Connects to many leading EHR systems to reduce documentation errors
- Newly designed accessory cable management stand



Connex VSM 6300—1-host USB port for accessories, 6-Cell Li-Ion Battery*

- #63NXXE-B CVSM 6300 SpO₂ (Nellcor), Temperature (Braun ThermoScan PRO 4000)
- #63MXXE-B CVSM 6300 SpO₂ (Masimo), Temperature (Braun ThermoScan PRO 4000)
- #63NXPE-B CVSM 6300 SpO₂ (Nellcor), Temperature (Braun ThermoScan PRO 4000), Printer
- #63MXPE-B CVSM 6300 SpO₂ (Masimo), Temperature (Braun ThermoScan PRO 4000), Printer
- #63NTXX-B CVSM 6300 SpO₂ (Nellcor), Temperature (SureTemp Plus)
- #63MTXX-B CVSM 6300 SpO₂ (Masimo), Temperature (SureTemp Plus)
- #63NTPX-B CVSM 6300 SpO₂ (Nellcor), Temperature (SureTemp Plus), Printer
- #63MTPX-B CVSM 6300 SpO₂ (Masimo), Temperature (SureTemp Plus), Printer

Connex VSM 6400—4-host USB port for accessories, 9-Cell Li-Ion Battery*

- #64NXXE-B CVSM 6400 SpO₂ (Nellcor), Temperature (Braun ThermoScan PRO 4000)
- #64MXXE-B CVSM 6400 SpO₂ (Masimo), Temperature (Braun ThermoScan PRO 4000)
- #64NXPE-B CVSM 6400 SpO₂ (Nellcor), Temperature (Braun ThermoScan PRO 4000), Printer
- #64MXPE-B CVSM 6400 SpO₂ (Masimo), Temperature (Braun ThermoScan PRO 4000), Printer
- #64NTXX-B CVSM 6400 SpO₂ (Nellcor), Temperature (SureTemp Plus)
- #64MTXX-B CVSM 6400 SpO₂ (Masimo), Temperature (SureTemp Plus)
- #64NTPX-B CVSM 6400 SpO₂ (Nellcor), Temperature (SureTemp Plus), Printer
- #64MTPX-B CVSM 6400 SpO₂ (Masimo), Temperature (SureTemp Plus), Printer

*Other model configurations are available.

Connex Accessories

- #4800-60 Accessory Cable Management Stand
- #4701-62 Wall Mount with Basket
- #4500-925 USB Cable for wired connectivity
- #04000-900 Braun ThermoScan® PRO 4000 Dock with Thermometer
- #S1-6000 One-Year Comprehensive Partnership Program
- #S1-6000-2 Two-Year Comprehensive Partnership Program



Welch Allyn Electrocardiographs

Our multichannel electrocardiographs (ECGs) are flexible enough to work in almost any office setting. The cost-effective Welch Allyn CP 100™ and full-featured Welch Allyn CP 200™ are reliable, easy-to-use devices that make taking an ECG more efficient for you and your staff. And with intuitive designs and advanced software features, you can manage and quickly generate patient data as you need it.

Welch Allyn CP 100 and CP 200 common features:

- Full alphanumeric keyboard and LCD display for fast and easy entry of patient information
- Advanced filters for optimal ECG trace quality ensure accurate readings
- Customizable report formats allow you to print information the way you need
- Battery operation lets you take the device to the patient
- Connectivity to many leading EHRs through the Welch Allyn CardioPerfect™ Workstation Software



#CP1A-1E1



#401393 with #401161

CP 100™ Electrocardiograph

A reliable, easy-to-use, and cost-effective ECG device designed for almost any office setting.

- A noninterpretive 12-lead resting ECG that provides accurate measurements
- Optional MEANS ECG interpretation software helps you interpret results
- High-resolution thermal printer generates standard full-sized reports and multiple printouts in the channel configuration you need
- Lead quality graphic saves valuable time and ensures accurate data capture by highlighting poor connections

#CP1-1E1 CP 100™ Noninterpretive
#CP1A-1E1 CP 100™ Interpretive

CP 200™ Electrocardiograph with Optional Spirometry

An easy-to-use, full-featured device with advanced options to help streamline workflow in your office.

Same features as the CP 100 plus:

- Large color LCD screen allows you to preview critical information on screen easily
- Save time by using dedicated function or “soft keys” to perform the most common functions without scrolling through menus
- Store up to 50 ECGs and 50 spirometry tests for later review and editing of patient data and interpretation
- Connect directly and easily to the Welch Allyn CardioPerfect™ Workstation Software through hardwire cable interface
- Optional spirometry testing and optional MEANS interpretation software

#CP2-1E1 CP 200™ Noninterpretive
#CP2A-1E1 CP 200™ Interpretive
#CP2S-1E1 CP 200™ Noninterpretive with Spirometry
#CP2AS-1E1 CP 200™ Interpretive with Spirometry

ECG Cart

- A must if you intend to move your device around the office
- Optional cable arm and shelf

#08265-0000 Standard Utility Cart
#401393 CP 100 & CP 200 Cart
#401161 Cable Arm and Shelf

PC-Based Resting ECG with Optional Spirometry

The Welch Allyn PCR-100 turns any PC into a full-featured electrocardiograph. Intuitive Windows® operation makes it easy for your staff to learn and use, while the power and features of a PC-based system will save money and increase utilization of existing equipment. And with its ability to connect with leading EHR systems, you'll be able to spend less time with your paperwork and more time with your patients.

- Large-screen display saves time and eliminates repeat ECGs
- ECG measurements speed physician review and interpretation
- Programmable report formats that print on plain paper using inkjet or laser printer
- Optional ECG interpretation available
- Upgradeable—leverage your investment by adding exercise stress, spirometry or ambulatory blood pressure

#CPR-UI-UB-D PCR-100i PC-Based Resting ECG with Interpretive Software
#CPR-UN-UB-D PCR-100 PC-Based Resting ECG with Noninterpretive Software



SureTemp® Plus 690 Electronic Thermometer

SureTemp Plus combines the speed of ear thermometry with the accuracy and reliability of traditional oral thermometry. You can take approximately 4- to 6-second oral temperatures, 10- to 13-second rectal temperatures, and 12- to 15-second adult axillary temperatures.

- Accurate to within +/- 0.2 °F (0.1 °C)
- Interchangeable, removable probe wells to reduce the risk of cross-contamination
- Large LCD that can display temperatures in Fahrenheit or Celsius
- Last temperature recall
- Convenient storage for 25 probe covers
- Takes approximately 6000 readings on 3 AA batteries

#01690-200 SureTemp Plus 690 Thermometer, Oral Probe with Probe Well
#01690-400 SureTemp Plus 690 Thermometer with Wall Mount
#02892-000 Rectal Probe and Well (4 ft)
#05031-101 Probe Covers (box of 1,000)



#01690-200



#04000-200

BRAUN ThermoScan PRO 4000

For residents and situations that require fast action, take temperatures quickly with infrared technology that measures body temperature accurately through the ear. The exclusive ExacTemp™ technology provides an active user feedback system to ensure proper positioning and improved accuracy.

- Improved accuracy and repeatability through a preheated probe tip and sensor
- Probe cover detection system ensures a new probe cover is used each time for precise infrared heat transfer and accurate temperatures
- Easy-to-read, backlit LCD in Fahrenheit or Celsius

#04000-200 Braun ThermoScan® PRO 4000
#04000-300 Braun ThermoScan® PRO 4000 with Recharging Base Station
#05075-800 Probe Covers (case of 800)

To meet the needs of a busy assisted living environment, Welch Allyn offers you a variety of modalities for temperature-taking for your patients.



FlexiPort® Blood Pressure Cuffs

True standardization in a snap.

Welch Allyn cuffs are the top choice for hospitals and clinics around the world. Why? Because Welch Allyn can offer you virtually every type, size, and configuration of cuffs, along with the ability to simplify inventory like no other cuff provider with our innovative FlexiPort® connection, which makes every cuff a one- or two-tube cuff.

- One-piece disposable or reusable options
- Easy one-hand attachment/detachment of tubing from FlexiPort fitting makes changing cuffs much faster and easier
- Tested to withstand demanding clinical environments
- Meets all the latest clinical guidelines for proper fit from AAMI and AHA
- Standardizing can reduce part numbers by up to 60%
- Available in longer sizes

What's FlexiPort?

The FlexiPort fitting provides a single point of connection between devices and cuffs, making any cuff a one- or two-tube cuff.



Patented FlexiPort® technology allows one cuff to work in virtually any patient care area.



Primary sizes are color-coded to make it easy to find the proper cuff size.

Rotatable port reduces stress to cuff tubing and port, improving patient comfort and cuff durability.

No sewn seams to tear or fray.
Soft, latex-free material minimizes risk of allergic reactions and ensures patient comfort.

Unique ability to connect and disconnect tubing, making one- and two-tube cuffs interchangeable.

The right cuff. The right tubes. At the right time.

The unique FlexiPort fitting enables true cuff standardization throughout your facility for the first time. With FlexiPort, finding the right cuff is made simpler than ever before by eliminating annoying hassles and frustrations of tube and connector configurations.

Welch Allyn FlexiPort® Reusable Blood Pressure Cuffs—Part Numbers



Use the following part numbers for complete, ready-to-use, individual replacement cuff(s) for the devices above.

Child	REUSE-09-1SC	REUSE-09-2MQ	REUSE-09-1TP	REUSE-09-2BV
Small Adult	REUSE-10-1SC	REUSE-10-2MQ	REUSE-10-1TP	REUSE-10-2BV
Adult	REUSE-11-1SC	REUSE-11-2MQ	REUSE-11-1TP	REUSE-11-2BV
Adult Long	REUSE-11L-1SC	REUSE-11L-2MQ	REUSE-11L-1TP	REUSE-11L-2BV
Large Adult	REUSE-12-1SC	REUSE-12-2MQ	REUSE-12-1TP	REUSE-12-2BV
Large Adult Long	REUSE-12L-1SC	REUSE-12L-2MQ	REUSE-12L-1TP	REUSE-12L-2BV
Thigh	REUSE-13-1SC	REUSE-13-2MQ	REUSE-13-1TP	REUSE-13-2BV

If you to CONVERT TO FLEXIPORT, select tubing from Section #1 and all desired cuff(s) from Section #2

Section #1: Select the appropriate TUBE type below. Each pack includes 10 tubes with connectors...enough for 10 devices.

Tube	1-SC	2-MQ	1-TPS	2-BVL
------	------	------	-------	-------

Section #2: Choose all desired cuff sizes. These are 'raw' cuffs. Notice that the part numbers are the same for all devices. That's why it's so easy!

Child	REUSE-09	REUSE-09	REUSE-09	REUSE-09
Small Adult	REUSE-10	REUSE-10	REUSE-10	REUSE-10
Adult	REUSE-11	REUSE-11	REUSE-11	REUSE-11
Adult Long	REUSE-11L	REUSE-11L	REUSE-11L	REUSE-11L
Large Adult	REUSE-12	REUSE-12	REUSE-12	REUSE-12
Large Adult Long	REUSE-12L	REUSE-12L	REUSE-12L	REUSE-12L
Thigh	REUSE-13	REUSE-13	REUSE-13	REUSE-13

Welch Allyn FlexiPort Disposable Blood Pressure Cuffs—Part Numbers

Option 1
Attach above fittings directly to your current device tubing.

Option 2
Buy FlexiPort cuffs with tubing and connectors to fit your blood pressure devices without making changes.

No Tubes or Connectors Required

One-Tube

Two-Tube



Size (20 cuffs/case)	Range	FlexiPort	Screw	Tri-Purpose	Locking	Bayonet	Screw	Locking	Tri-Purpose & Empty Tube	Inflation Sys.
Child (9)	15-21 cm	SOFT-09	SOFT-09-1SC	SOFT-09-1TP	SOFT-09-1MQ	SOFT-09-1HP	SOFT-09-2SC	SOFT-09-2MQ	SOFT-09-2TP	SOFT-09-2BV
Small Adult (10)	20-26 cm	SOFT-10	SOFT-10-1SC	SOFT-10-1TP	SOFT-10-1MQ	SOFT-10-1HP	SOFT-10-2SC	SOFT-10-2MQ	SOFT-10-2TP	SOFT-10-2BV
Adult (11)	25-34 cm	SOFT-11	SOFT-11-1SC	SOFT-11-1TP	SOFT-11-1MQ	SOFT-11-1HP	SOFT-11-2SC	SOFT-11-2MQ	SOFT-11-2TP	SOFT-11-2BV
Adult Long (11L)	25-34 cm	SOFT-11L	SOFT-11L-1SC	SOFT-11L-1TP	SOFT-11L-1MQ	SOFT-11L-1HP	SOFT-11L-2SC	SOFT-11L-2MQ	SOFT-11L-2TP	SOFT-11L-2BV
Large Adult (12)	32-43 cm	SOFT-12	SOFT-12-1SC	SOFT-12-1TP	SOFT-12-1MQ	SOFT-12-1HP	SOFT-12-2SC	SOFT-12-2MQ	SOFT-12-2TP	SOFT-12-2BV
Large Adult Long (12L)	32-43 cm	SOFT-12L	SOFT-12L-1SC	SOFT-12L-1TP	SOFT-12L-1MQ	SOFT-12L-1HP	SOFT-12L-2SC	SOFT-12L-2MQ	SOFT-12L-2TP	SOFT-12L-2BV
Thigh (13)	40-55 cm	SOFT-13	SOFT-13-1SC	SOFT-13-1TP	SOFT-13-1MQ	SOFT-13-1HP	SOFT-13-2SC	SOFT-13-2MQ	SOFT-13-2TP	SOFT-13-2BV

For vinyl cuffs, replace "SOFT" with "VINYL" in part number (Vinyl "TP" version not available).

Harvey™ Elite® Stethoscope

- Full-range cardiology/pulmonology stethoscope
- Double-head (bell and flat diaphragm) stainless steel chestpiece with nonchill rim
- Rotatable stainless steel binaurals and interchangeable comfort sealing eartips
- Chrome-plated brass chestpieces
- Triple-leaf binaural spring encased in polyurethane allows adjustment without the risk of breaking
- 28" length
- 10-year warranty
- Latex free

#5079-125 Elite Stethoscope (black, other colors available)



Professional Stethoscopes

Lightweight, comfortable, and affordable.

- General-use stethoscope
- Stainless steel double-head (bell and flat diaphragm) chestpiece with nonchill rim
- Rotatable binaurals and interchangeable comfort sealing eartips
- 5-year warranty
- Latex free

#5079-135 Single Lumen Professional Stethoscope (Adult, Double Head, black, other colors available)



Lightweight Double-Head Stethoscope

This lightweight, high-quality stethoscope is perfect for blood pressure measurements and general auscultation. Featuring flexible single-channel tubing, they ensure extreme comfort even when used over extended periods.

- Adjustable chrome-plated binaurals
- Lightweight and comfortable
- 31" overall length
- 2-year warranty

#5079-73 Single Lumen Professional Stethoscope (Adult, Double Head, black, other colors available)



767 Wall and Mobile Aneroids

Improved ergonomics and a modern design make the 767 Aneroid an easy-to-use and attractive blood pressure device. Based on Welch Allyn's near century of experience building and designing innovative blood pressure technology, it's the smart choice for accurate and reliable readings in your facility.

- Certified accuracy to ± 3 mmHg
- Laser-engraved dial face provides unmatched accuracy
- Recessed dial face and high-contrast red pointer increase visibility and reduce parallax errors
- Lifetime calibration warranty
- New 5-leg stand provides improved stability and maneuverability
- Latex- and mercury-free

#7670-01 Wall Aneroid with Reusable One-Piece Adult Cuff

#7670-02 Gauge and Tubing Only, 8'

#7670-03 Mobile Aneroid (Adult) with Five-Leg Mobile Stand and Reusable One-Piece Adult Cuff



#DS58-11CB
(cuff not shown)

Tycos® DS58 Classic Hand Aneroid with DuraShock™ Technology

Unsurpassed reliability in a traditional, handheld design with gear-free DuraShock technology.

- Certified accuracy to ± 3 mmHg
- Lifetime calibration warranty
- Meets twice the AAMI shock-resistant standard for enhanced durability (60")
- Laser-engraved dial face for accuracy
- Jeweled movement for long life
- Premium inflation system for comfort
- Latex-free for safety

#DS58-11CB Sphygmomanometer with Two-Piece Adult Cuff and Bladder and Zippered Case

#DS58-MCCB Multi-Cuff Kit with Two-Piece Cuff and Bladder (adult, large adult) and Zippered Case

DS44 Integrated Aneroid with DuraShock™ Technology

The first gear-free, shock-resistant aneroid sphygmomanometer delivers accurate, lower cost blood pressure readings because the gauge stays calibrated longer than traditional gauges with gears.

- Meets AAMI shock-resistant standard
- 5-year calibration warranty
- Gauge rotates 360° for easy viewing and snaps directly into cuff for quick cuff change
- Lightweight and latex-free for safety
- Durable one-piece cuff

#DS44-11 Sphygmomanometer with One-Piece Adult Cuff

#DS44-11C Sphygmomanometer with One-Piece Adult Cuff and Case



#DS44-11

DS45 Integrated Aneroid with DuraShock™ Technology

All the features of the Model DS44 with the following enhancements:

- Meets AAMI shock-resistant standard
- 10-year calibration warranty
- Gauge rotates 360° for easy viewing and snaps directly into cuff for quick cuff change
- Lightweight and latex-free for safety
- Laser-engraved dial face for accuracy
- Tycos® long-life valve



#DS45-11

#DS45-11C Sphygmomanometer with One-Piece Adult Cuff and Case

OSZ 5 Home Blood Pressure Monitor

- Easy-to-use, one-button operation
- "Fuzzy logic" smart inflation system is faster and more comfortable for the user
- Large, easy-to-read display shows systolic, diastolic, and pulse measurements simultaneously
- Universal cuff fits all arm sizes
- Convenient battery door makes it easy to change batteries

#7052-34 OSZ 5 Home Blood Pressure, Auto-inflation

#7052-36 Optional Large Adult Cuff

#7052-37 Optional Voltage Adapter



#7052-34



Welch Allyn blood pressure products featuring DuraShock technology are the only gauges with a shock-resistant, gear-free design. The unique design allows increased shock resistance, providing additional durability and requiring calibration less often than many competing gauges. The end result? Welch Allyn blood pressure gauges maintain accurate readings longer than competing gauges, costing you less over time. Learn more at welchallyn.com.





#76710-82M

767 Wall Transformers

Accurate diagnostics within easy reach.

- Offers the flexibility to add on as you grow
- Handle-based rheostats for quick light intensity adjustments
- Modular design provides ability to add third handle or SureTemp® Plus thermometer
- OptiSense™ sensor automatically turns handles on and off when removed and replaced from cradle

#76710-82M

767 Wall Transformer plus:
PanOptic Ophthalmoscope* (#11820)
MacroView Otoscope** (#23810)

#76710-81M

767 Wall Transformer plus:
PanOptic Ophthalmoscope* (#11810)
MacroView Otoscope** (#23810)

#76710-72M

767 Wall Transformer plus:
Coaxial Ophthalmoscope* (#11720)
MacroView Otoscope** (#23810)



#76793-MX

767 Integrated Diagnostic Systems

Otoscope, ophthalmoscope, thermometer, sphygmomanometer, probe covers, eartips—all the essential diagnostic instruments and consumables for every office-based medicine exam room, integrated for efficiency and convenience.

- Choice of MacroView™ Otoscope** or Pneumatic Otoscope with ultraseal system
- Choice of the revolutionary PanOptic™ Ophthalmoscope or a 3.5 V Coaxial Ophthalmoscope*
- Handle-based rheostats for quick light intensity adjustment
- 767 Wall Aneroid with easy-to-read dial face, certified accuracy, and lifetime calibration program
- KleenSpec® Plus Disposable Specula Dispenser, prefilled with ear specula
- Optional—767 SureTemp® Plus Electronic Thermometer for highly accurate oral readings in approximately 4 to 6 seconds

FOUR COMPLETE SYSTEMS DESIGNED FOR EXTENDED CARE MEDICINE, all with 767 Wall Aneroid (#7670-01), 767 SureTemp® Plus Thermometer (#01690-300) and Disposable Specula Dispenser:

#76791-2MPX

PanOptic Ophthalmoscope* (#11820)
MacroView Otoscope** (#23810)

#76797-X

Coaxial Ophthalmoscope* (#11720)
Pneumatic Otoscope (#20201)

#76797-2PX

PanOptic Ophthalmoscope* (#11820)
Pneumatic Otoscope (#20201)

#76793-MX

Coaxial Ophthalmoscope* (#11720)
MacroView Otoscope** (#23810)

*For full details on the PanOptic and Coaxial Ophthalmoscopes, see page 18.

**For full details on the MacroView Otoscope, see page 19.

(Also available with Spot Vital Signs® LXi.)

Universal Desk Charger Set

Keep your diagnostic instruments powered up and ready to go with our most popular handles and instruments in one easy-to-order set.

- Colored LEDs signal power is “on” and instruments are charging
- Advanced circuitry ensures constant, safe charging and optimum, long lamp life
- Optional—wall mount kit and/or specula tray

#71811-MPS

Universal Desk Charger plus:
PanOptic™ Ophthalmoscope* (#11810)
MacroView™ Otoscope** (#23810)
2 Lithium Ion Handles (#71910)

#71510-PSM

Universal Desk Charger plus:
PanOptic Ophthalmoscope* (#11810)
Pneumatic Otoscope (#20201)
2 Lithium Ion Handles (#71910)

#71641-M

Universal Desk Charger plus:
Coaxial Ophthalmoscope* (#11720)
MacroView Otoscope** (#23810)
2 NiCad Handles (#71670)

*For full details on the PanOptic and Coaxial Ophthalmoscopes, see page 18.

**For full details on the MacroView Otoscope, see page 19.



#71811-MPS

3.5 V Lithium Ion Rechargeable Handle

Twice the power, half the weight.

- Smaller diameter and half the weight of 3.5 V NiCad handles
- 120 minutes of operation between charges (compared to 60 minutes for standard NiCad handles)
- Charges in Universal Desk Charger or with removable AC adapter
- Compatible with all Welch Allyn 3.5 V instrument heads
- Low battery indicator light

#71900 Handle with Removable AC Adapter

#71910 Handle alone, for use with Universal Desk Charger

#71960 Replacement Lithium-Ion Battery



#71900

3.5 V Nickel Cadmium Rechargeable Handle

A choice of convenient rechargeable power sources that fit all our 3.5 V instrument heads.

- Smooth, nonabrasive knurled finish ensures a no-slip grip
- Chrome-plated brass construction for durability and reliable long life
- 60 minutes of operation between charges
- Rechargeable and can also be converted for use with standard C-cell batteries
- Charges in Universal Desk Charger and numerous stand consoles and well chargers

#71000-A Rechargeable Handle

#71000-C Rechargeable/Convertible Handle

#71670 Rechargeable Handle for Desk/Well Chargers

#72300 Replacement NiCad Rechargeable Battery



#71670

“The PanOptic ophthalmoscope’s breadth of the field of view gives me a much greater visual appreciation of retinal structures. It increases my confidence during an exam.”

— LARRY CULPEPPER, MD
BOSTON, MA

3.5 V Standard Coaxial Ophthalmoscope

- Detect corneal abrasions with cobalt blue filter
- Coaxial optical system produces shadow-free spot viewing
- Polarizing filter virtually eliminates corneal reflection
- Sealed optics keep out dust and dirt

- #11720 3.5 V Coaxial Ophthalmoscope (head only)
- #04900-U Halogen HPX™ Replacement Lamp
- #04900-LED LED Replacement Lamp



#11720



#23820
(head only)

MacroView™ Otoscope

The MacroView Otoscope delivers almost twice the field of view at higher magnification compared to standard otoscopes, making it easier to visualize the auditory canal and tympanic membrane. This instrument is a significant advance in hand-held otoscopy, providing an improved view for enhanced learning and decision making.

- A nearly complete view of the tympanic membrane with approximately twice the field of view and 30% greater magnification than a traditional otoscope
- Better clarity and definition of landmarks
- The ability to adjust focus for variable ear canal length or farsighted eyes
- Tip grip for secure fastening and ejection of ear specula
- Insufflation port for pneumatic otoscopy

- #23820 MacroView Otoscope with Throat Illuminator (head only)
- #23810 MacroView Otoscope (head only)
- #23824 MacroView Otoscope with Throat Illuminator and Insufflator Bulb
- #23804 Insufflation Bulb for MacroView
- #52432-U 524 Series KleenSpec® Disposable Specula, 2.75 mm (850/bag, 10 bags/case)
- #52434-U 524 Series KleenSpec® Disposable Specula, 4.25 mm (850/bag, 10 bags/case) (80/box, 6 boxes/case)
- #52700 Instrumentation Specula Slotted Tip for #23810 and #23820 MacroView Otoscope (48/box, 4 boxes/case)
- #06500-U Halogen HPX™ Replacement Lamp
- #06500-LED LED Replacement Lamp

PanOptic™ Ophthalmoscope

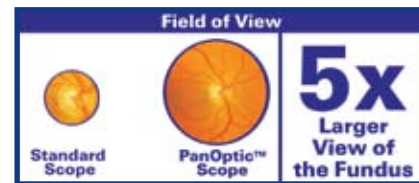
The revolutionary PanOptic provides easy entry into the eye, together with a wider field of view to more easily observe conditions such as hypertension, diabetic retinopathy, and papilledema.

- Fast, easy entry into undilated pupils
- 5x larger view of the fundus vs. standard scopes in an undilated eye
- 25° field of view vs. the standard 5° field of view
- Greater working distance improves comfort for both practitioner and patient
- Detect corneal abrasions with cobalt blue filter and magnifying lens
- Compatible with all existing Welch Allyn 3.5 V power sources
- Free diagnostic wall chart available

- #11820 PanOptic Ophthalmoscope with Cobalt-Blue Filter and Add-On Corneal Magnifying Lens (head only)
- #11810 PanOptic Ophthalmoscope (head only)
- #03800-U Halogen HPX™ Replacement Lamp
- #03800-LED LED Replacement Lamp



#11820
(head only)



See www.panoptic.welchallyn.com for an interactive demo.

2.5 V PocketScope™ Set

In the office or out, you'll always have the accuracy and convenience of Welch Allyn diagnostics right in your pocket.

- 2.5 V PocketScope Ophthalmoscope with consistent, long-lasting halogen illumination for true tissue color
- 2.5 V Otoscope with built-in throat illuminator gives you two instruments in one, with halogen illumination and fiber optics for cool light
- Adjustable rheostat to control light intensity
- Powered by AA batteries
- Available in either hard or soft case

- #92820 PocketScope Pocket Set with Hard Case
- #92821 PocketScope Pocket Set with Soft Case
- #52432-U 524 Series KleenSpec® Disposable Specula, 2.75 mm (850/bag, 10 bags/case)



#92821

Green Series™ Medical Exam Lights

Welch Allyn Green Series Medical Exam Lights are among the first to feature white LEDs that provide a brighter, whiter light than ever before and consume less energy. So now you can see truer tissue color during an exam or procedure while also reducing your current cost of ownership.

- 5,500 °K white light-emitting diodes (LEDs) as opposed to halogen, for a superior whiter, brighter light
- Truer tissue rendition and uniform spot—no dark or hot spots—for enhanced visualization of the exam area
- No bulb replacement for cost savings and less waste
- Consumes less energy for reduced cost of ownership
- Touchless auto on/off controls to reduce the risk of cross-contamination
- Ergonomic design that is easy to clean
- 5-year limited warranty



LED VS. HALOGEN

GS Exam Light IV

- Perfect for the OB/GYN office or for specialties that require very focused light in specific areas
- 3x the typical light output and features a highly flexible light pipe that is twice as long as conventional pipes
- Compact, unobtrusive head that ensures pinpoint accuracy and truer tissue color during an exam

- #48810 GS Exam Light IV with Table/Wall Mount
- #48950 Mobile Stand for GS Exam Light IV
- #48955 Table/Wall Mount
- #52640 Disposable Sheath (25/box, 5 boxes/case)



#48810

#44400

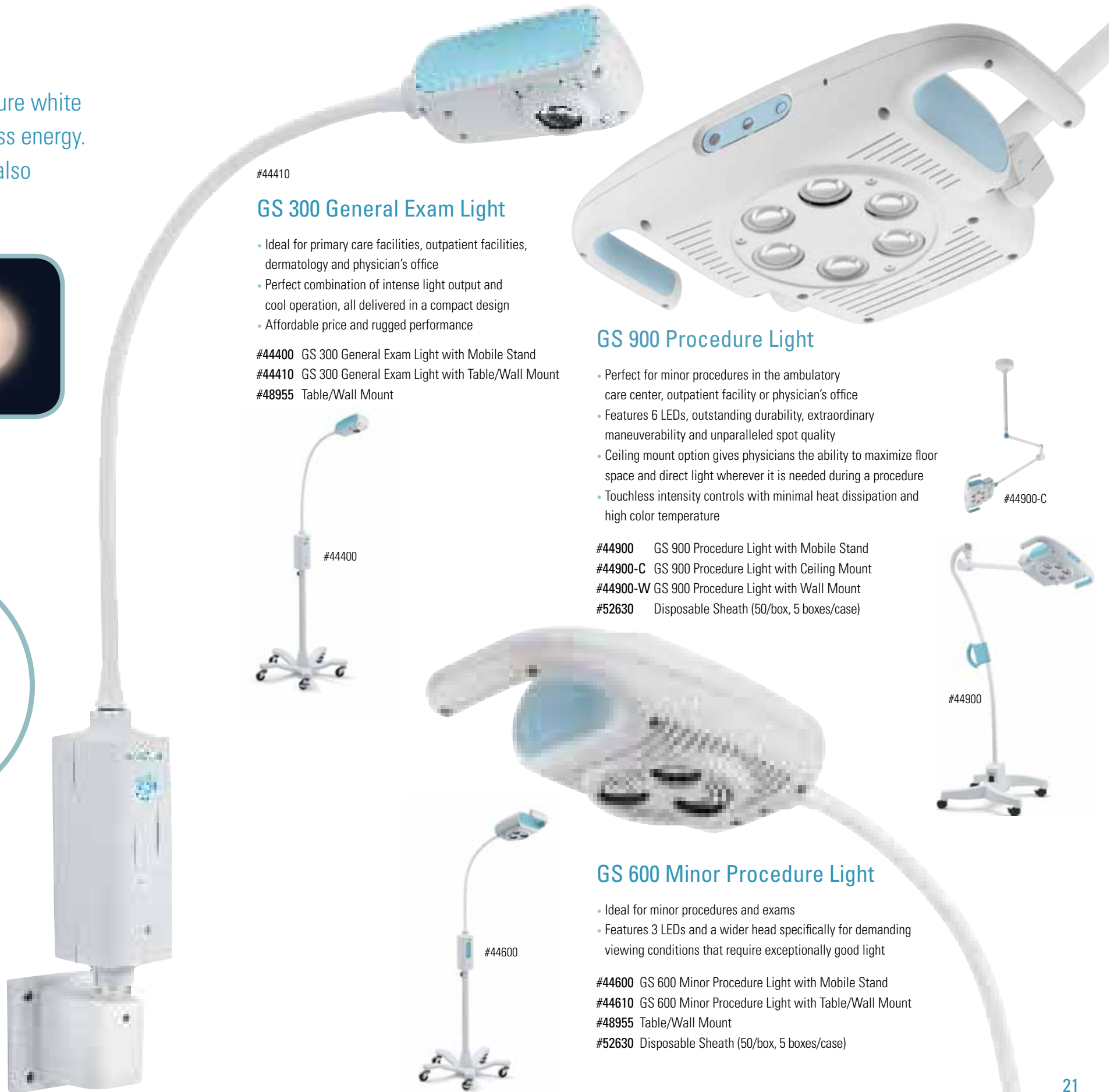


#44410

GS 300 General Exam Light

- Ideal for primary care facilities, outpatient facilities, dermatology and physician's office
- Perfect combination of intense light output and cool operation, all delivered in a compact design
- Affordable price and rugged performance

- #44400 GS 300 General Exam Light with Mobile Stand
- #44410 GS 300 General Exam Light with Table/Wall Mount
- #48955 Table/Wall Mount



GS 900 Procedure Light

- Perfect for minor procedures in the ambulatory care center, outpatient facility or physician's office
- Features 6 LEDs, outstanding durability, extraordinary maneuverability and unparalleled spot quality
- Ceiling mount option gives physicians the ability to maximize floor space and direct light wherever it is needed during a procedure
- Touchless intensity controls with minimal heat dissipation and high color temperature

- #44900 GS 900 Procedure Light with Mobile Stand
- #44900-C GS 900 Procedure Light with Ceiling Mount
- #44900-W GS 900 Procedure Light with Wall Mount
- #52630 Disposable Sheath (50/box, 5 boxes/case)



#44900-C

#44900

GS 600 Minor Procedure Light

- Ideal for minor procedures and exams
- Features 3 LEDs and a wider head specifically for demanding viewing conditions that require exceptionally good light

- #44600 GS 600 Minor Procedure Light with Mobile Stand
- #44610 GS 600 Minor Procedure Light with Table/Wall Mount
- #48955 Table/Wall Mount
- #52630 Disposable Sheath (50/box, 5 boxes/case)

#44600

“The Welch Allyn Ear Wash System is so convenient! It’s much less irritating to the resident, and much easier and cleaner than the syringe we had used.”

— CHERI MAY, RN
ADAMS, MN

Ear Wash System

Our award-winning system turns the entire process of cerumen (ear wax) removal into a clean, quick and safe procedure. It’s the first system to simultaneously irrigate and suction discharge using revolutionary Hydrovac Action from Welch Allyn.

- Eliminates messy outflow by automatically dislodging, removing and disposing of cerumen
- Transparent tip seals tightly and directs outflow back to sink and away from you and your resident
- Features include: pressure regulation, temperature indicator/control and suctioning action
- Safe, reduces typical side effects like vertigo, nausea and tympanic membrane damage

#29350 Ear Wash System

#29360 Eartips for Ear Wash System
(Case of four boxes, or 100 Eartips)



Professional PenLite

For quick and effective evaluation of the pupillary reflex.

- Bright, white halogen light for truer tissue color rendition
- Durable solid brass construction

#76600 Professional PenLite



Consumables

Product Name	Part No.	Ref. Page	Product Affiliation
Otoscope Specula	#52432-U	16, 17, 19	524 Series, MacroView, Disposable KleenSpec,® 2.75 mm (850/bag, 10 bags/case)
	#52434-U	16, 17, 19	524 Series, MacroView, Disposable KleenSpec,® 4.25 mm (850/bag, 10 bags/case)
	#52700	19	Slotted Tip for #23810 and #23820 MacroView Otoscope (48/box, 4 boxes/case)
	#24320	19	MacroView,™ Disposable SofSeal™ Sealing Accessory for Otoscope, Small, for 2 to 4.25 mm (80/box, 6 boxes/case)
	#24330	19	MacroView,™ Disposable SofSeal™ Sealing Accessory for Otoscope, Medium, for 3 mm, 4 mm, 5 mm (80/box, 6 boxes/case)
Ear Wash System Tips	#29360	22	Eartips for Ear Wash System (Case of 4 boxes or 100 eartips)
Thermometry	#05031-101	4, 5, 9	Disposable Thermometer Probe Covers for SureTemp® 678, 679, 690, 692 and 986 Models; Spot Vital Signs® LXi, Spot Vital Signs® (1,000 each)
	#05075-800	9	Disposable Thermometer Probe Covers for Braun ThermoScan® PRO 4000 (800 each)
Paper	#6000-40	7	Connex® VSM Printer Paper (10/pack)
	#94016-0000	8	Paper for CP 100™ and CP 200™ 8.25" x 11" (1,000 sheets)
Batteries	#72200	16	Replacement NiCad Rechargeable Battery (black) for Desk/Wall Charger Handle
	#71960	17	Replacement Lithium Ion Battery
	#72300	17	Replacement NiCad Battery for #71000-A and #71000-C Plug-in Handles
Lamps	#03000-U	N/A	Ophthalmoscope #11710
	#04900-U	18	Ophthalmoscopes #11720, 11730, 11735
	#04900-LED	18	Ophthalmoscopes #11720, 11730, 11735
	#03800-U	18	PanOptic™ Ophthalmoscopes #11810, 11820
	#03800-LED	18	PanOptic™ Ophthalmoscopes #11810, 11820
	#06500-U	19	MacroView™ Otoscope #23810, 23820
	#06500-LED	19	MacroView™ Otoscope #23810, 23820